

## R-C Thermal Model Parameters

### DESCRIPTION

The parametric values in the R-C thermal model have been derived using curve-fitting techniques. R-C values for the electrical circuit in the Foster/tank and Cauer/filter configurations are included. When implemented in P-SPICE, these values have matching characteristic curves to the single-pulse transient thermal impedance curves for the MOSFET.

These RC values can be used in the P-SPICE simulation to evaluate the thermal behavior of the MOSFET junction temperature under a defined power profile. These techniques are described in application note AN609, "Thermal Simulation of Power MOSFETs on the P-SPICE Platform".

### R-C THERMAL MODEL FOR TANK CONFIGURATION



<b>R-C VALUES FOR TANK CONFIGURATION</b>			
<b>THERMAL RESISTANCE (°C/W)</b>			
<b>Junction to</b>	<b>Ambient</b>	<b>Case</b>	<b>Foot</b>
RT1	N/A	54.0854 m	N/A
RT2	N/A	123.7768 m	N/A
RT3	N/A	248.6800 m	N/A
RT4	N/A	133.4578 m	N/A
<b>THERMAL CAPACITANCE (Joules/°C)</b>			
<b>Junction to</b>	<b>Ambient</b>	<b>Case</b>	<b>Foot</b>
CT1	N/A	4.1414 m	N/A
CT2	N/A	150.3016 m	N/A
CT3	N/A	150.2554 m	N/A
CT4	N/A	24.7654 m	N/A

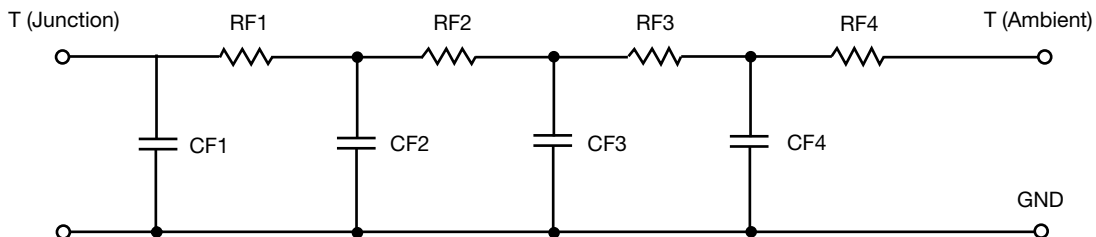
#### Note

N/A indicates not applicable

*This document is intended as a SPICE modeling guideline and does not constitute a commercial product datasheet. Designers should refer to the appropriate datasheet of the same number for guaranteed specification limits.*



## R-C THERMAL MODEL FOR FILTER CONFIGURATION



R-C VALUES FOR FILTER CONFIGURATION			
THERMAL RESISTANCE (°C/W)			
Junction to	Ambient	Case	Foot
RF1	N/A	57.9136 m	N/A
RF2	N/A	187.5157 m	N/A
RF3	N/A	134.3644 m	N/A
RF4	N/A	180.2063 m	N/A
THERMAL CAPACITANCE (Joules/°C)			
Junction to	Ambient	Case	Foot
CF1	N/A	2.2453 m	N/A
CF2	N/A	14.4841 m	N/A
CF3	N/A	44.1958 m	N/A
CF4	N/A	99.7504 m	N/A

**Note**

N/A indicates not applicable

